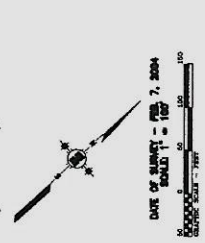


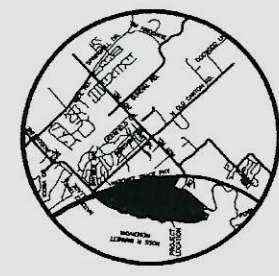
# THE TOWN OF LOST RABBIT, PHASE I

SITUATED IN THE SE 1/4 OF SECTION 11, SW 1/4 OF SECTION 12, NW 1/4 OF SECTION 13, N 1/2 OF SECTION 14, T7N, R2E  
MADISON COUNTY, MISSISSIPPI

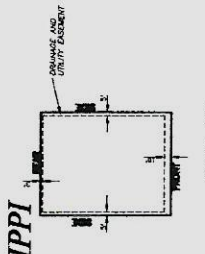
08241



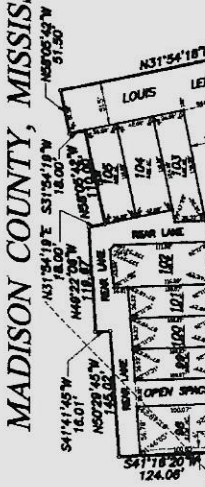
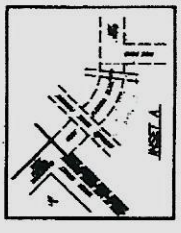
REFERENCE MERIDIAN-BEARINGS SHOWN ON THIS PLAT ARE IN NORTH ARKANSAS TRANSVERSE MERCATOR PROJECTION WEST ZONE (NAD83)



VICINITY MAP



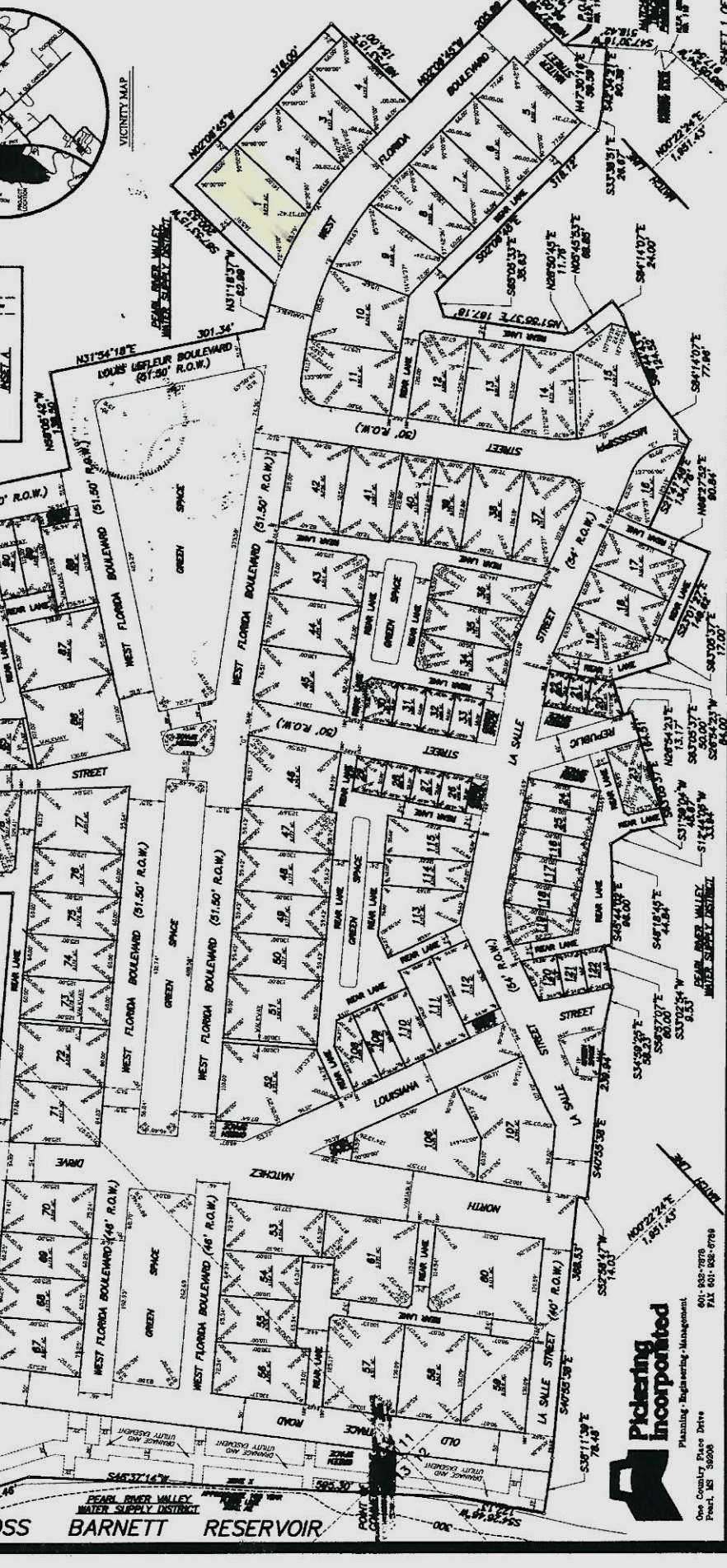
NOTE: THE LOTS SHOWN ARE 1/4 ACRES EACH. EXCEPT LOTS 40, 41, 42 AND 16. (SEE PLAN)



**CURVE DATA**

Stationing	Angle (°)	Radius (ft)	Chord (ft)	Chord Bearing	Distance (ft)
1+00.00	35.00	100.00	32.14	S 35.00° E	100.00
1+32.14	35.00	100.00	32.14	S 35.00° E	100.00
1+64.28	35.00	100.00	32.14	S 35.00° E	100.00
1+96.42	35.00	100.00	32.14	S 35.00° E	100.00
2+28.56	35.00	100.00	32.14	S 35.00° E	100.00
2+60.70	35.00	100.00	32.14	S 35.00° E	100.00
2+92.84	35.00	100.00	32.14	S 35.00° E	100.00
3+24.98	35.00	100.00	32.14	S 35.00° E	100.00
3+57.12	35.00	100.00	32.14	S 35.00° E	100.00
3+89.26	35.00	100.00	32.14	S 35.00° E	100.00
4+21.40	35.00	100.00	32.14	S 35.00° E	100.00
4+53.54	35.00	100.00	32.14	S 35.00° E	100.00
4+85.68	35.00	100.00	32.14	S 35.00° E	100.00
5+17.82	35.00	100.00	32.14	S 35.00° E	100.00
5+50.00	35.00	100.00	32.14	S 35.00° E	100.00
5+82.14	35.00	100.00	32.14	S 35.00° E	100.00
6+14.28	35.00	100.00	32.14	S 35.00° E	100.00
6+46.42	35.00	100.00	32.14	S 35.00° E	100.00
6+78.56	35.00	100.00	32.14	S 35.00° E	100.00
7+10.70	35.00	100.00	32.14	S 35.00° E	100.00
7+42.84	35.00	100.00	32.14	S 35.00° E	100.00
7+75.00	35.00	100.00	32.14	S 35.00° E	100.00
8+07.14	35.00	100.00	32.14	S 35.00° E	100.00
8+39.28	35.00	100.00	32.14	S 35.00° E	100.00
8+71.42	35.00	100.00	32.14	S 35.00° E	100.00
9+03.56	35.00	100.00	32.14	S 35.00° E	100.00
9+35.70	35.00	100.00	32.14	S 35.00° E	100.00
9+67.84	35.00	100.00	32.14	S 35.00° E	100.00
10+00.00	35.00	100.00	32.14	S 35.00° E	100.00

NOTE: THE TOWN OF LOST RABBIT IS REPRESENTED ON THIS PLAT AS A SUBDIVISION OF LAND. THE TOWN OF LOST RABBIT DOES NOT INCLUDE, BUT IS NOT LIMITED TO, WATER, NATURAL GAS, TELEPHONE, ELECTRICITY, ETC. LOCATED IN THE TOWN OF LOST RABBIT AS REPRESENTED ON THIS PLAT IS CAUTIONED TO ASCERTAIN THE AVAILABILITY OF SUCH SERVICES FROM THE LOCAL SERVICE PROVIDERS. THE TOWN OF LOST RABBIT DOES NOT INCLUDE, BUT IS NOT LIMITED TO, WATER, NATURAL GAS, TELEPHONE, ELECTRICITY, ETC. LOCATED IN THE TOWN OF LOST RABBIT AS REPRESENTED ON THIS PLAT IS CAUTIONED TO ASCERTAIN THE AVAILABILITY OF SUCH SERVICES FROM THE LOCAL SERVICE PROVIDERS.



**Piedmont Incorporated**  
 Planning - Engineering - Management  
 One Country Place Drive  
 Pearl, MS 38608  
 601-932-7878  
 FAX 601-932-0789

SHEET 1 OF 2